

Dethleffs
winterproof

JACK FROST IS NOT WELCOME HERE!

Tips & tricks
for winter camping



Dethleffs
A friend of the family

Camping fun all year round

with Dethleffs caravans

The Allgäu – Dethleffs headquarters since 1931 – is a popular winter destination with its long winters and abundance of snow. It is therefore hardly surprising that Dethleffs has earned a reputation as a true winter expert. You can recognise this from standard features such as the Dethleffs AirPlus overhead-locker ventilation and our particularly well-insulated living areas; but also from the fact that you can order most models with comfortable warm-water heating with separate heating circuits, internal wastewater tanks and optional flush fitting windows.

Winterproof: Dethleffs Winter Comfort Packages

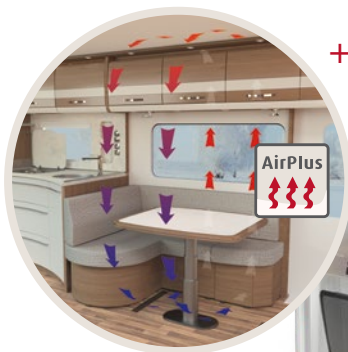
A unique feature of Dethleffs is our optional Winter Comfort Packages – they allow true winter fans to enjoy winter camping even in icy temperatures. Numerous clever details ensure limitless winter fun, such as the use of highly compressed XPS foam as an insulation material, a powerful warm-water heating system as well as insulated and heated wastewater pipes, which prevent the water circuit from freezing. And the floor heating, which can be operated electrically or with hot water depending on the system, is a touch of pure luxury.

Experience winter camping in a new light – with winterised vehicle technology from Dethleffs, the winter specialists.

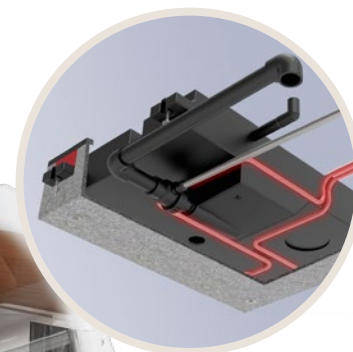




We make your vehicle fit for winter



+ AirPlus ventilates the overhead lockers and thus prevents the formation of condensation



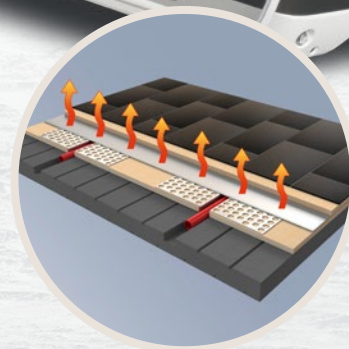
+ Heated and insulated 42l wastewater tank so that nothing freezes – even when the mercury falls below zero (only included in the “Generation Scandinavia” series)



+ The XPS insulation combined with the 34mm-thick walls and 42mm-thick floor provides optimum insulation, even in freezing temperatures



+ The water pipes are laid directly on the heating pipes and thus protected from freezing (fig. warm-water heating)



+ Whether hot water or electric, the floor heating ensures uniform heat distribution – and warm feet



Dethleffs indoor climate systems

For a feel-good atmosphere – even in winter

AirPlus overhead locker ventilation

Wherever warm air cools quickly, moisture is generated – in a caravan, this primarily occurs on the exterior walls during very cold weather. Our AirPlus system provides rear ventilation for the overhead lockers, which improves the air circulation in the room and prevents the build-up of condensation from the outset. The result is healthy interior air without mould formation or mould spots.

First-class insulation values

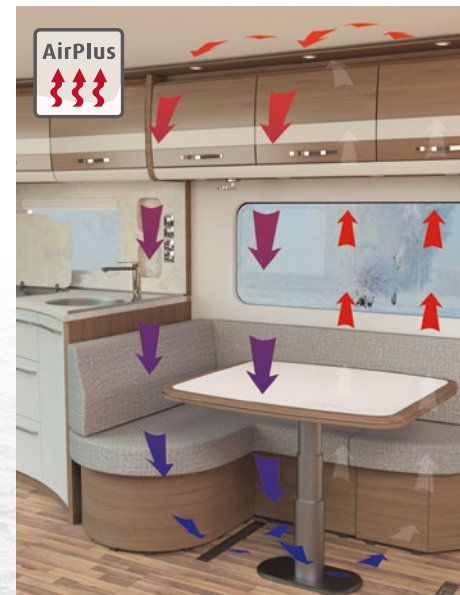
The better insulated your vehicle is, the lower your energy costs for heating or air conditioning will be. The living area inside your Dethleffs caravan is constructed using extra chunky sandwich elements, including 34mm-thick walls and a 42mm-thick floor – above-average values that guarantee first-class insulation.

Enjoy the perfect indoor climate with premium warm-water heating

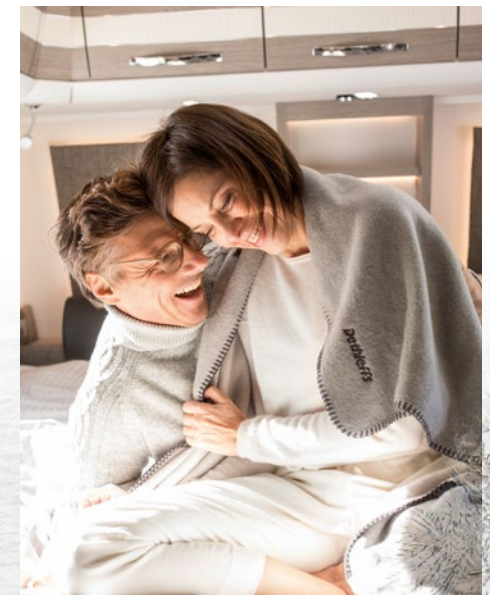
Our premium warm-water heating ensures even and comfortable heat distribution throughout the vehicle. As a fanless system it is ideal for allergy sufferers. Combined with the optional floor heating, it creates an optimal living climate, even for bare feet.



Well insulated: wall thickness 34mm, floor thickness 42mm



The AirPlus system prevents the build-up of condensation



Enjoy constant, cosy warmth – just like at home

The Winterproof Endurance Test

For a feel-good atmosphere – even in winter

Swedish winters can be very cold. Especially in the cold chamber of our Swedish supplier for caravan warm-water heaters. This was where we chose to put one of our winterproof caravans from the Allgäu through its paces. We subjected a Dethleffs Caravan equipped with our Winter Comfort Package to a real endurance test at -30°C – watched live by Scandinavian and German journalists.

Let the test begin:

For the test in accordance with DIN EN 1645-1, the vehicle is cooled down to -15°C . Subsequently, the temperature in the interior must have reached a pleasant 20°C after 4 hours. Our hardy caravan from the Allgäu not only reached $+20^{\circ}\text{C}$ in just 2.5 hours, but also passed the Dethleffs endurance test at a canter – with the outdoor thermometer showing a frosty -30°C . And inside? Cosily pleasant temperatures and satisfied faces on the technicians and journalists.

Suitable for winter use – or fully winterproof?

“Suitable for winter use” means that, at an outside temperature of 0°C , the vehicle’s interior can be permanently heated to 20°C . This is the case for all production vehicles from Dethleffs. For most manufacturers, “winterproof” describes a vehicle that complies with inspection level 3 of the DIN EN 1645-1 standard. This stipulates that it must be possible to heat a completely cold vehicle from -15°C to $+20^{\circ}\text{C}$ in just four hours.



The Dethleffs test team in Sweden



Checking the temperatures with a thermal imager

Winter Comfort Packages

It's so easy to make your Dethleffs winterproof

Being a true Allgäu native, every Dethleffs caravan is a big fan of winter camping. This means you can enjoy a winter trip even with a compact caravan (from our Camper series). Our Winter Comfort Packages are available with electric heating or a fanless or warm-water heating system (ideal for allergy sufferers). In addition, all packages include floor heating. Full details of the packages can be found in the current caravan price list.



Winter Comfort Packages

Winter Comfort Package (for S 3004)

- + Additional Ultraheat device (2000W electric heater) for **existing S3004 warm-air heating system**
- + Electric floor heating
- + XPS insulation: front, rear, side walls, roof and floor
- + Insulated and heated wastewater pipes

Winter Comfort Package Plus

- + S5004 warm-air heating system
- + Additional Ultraheat device (2000W electric heater)
- + Electric floor heating
- + XPS insulation: front, rear, side walls, roof and floor
- + Insulated and heated wastewater pipes

Winter Comfort Package (for Combi 4)

(cannot be combined with Water & Electric Autarkic Package)

- + Electric floor heating
- + XPS insulation: front, rear, side walls, roof and floor
- + Insulated and heated wastewater pipes

Winter Comfort Package Combi 6

(cannot be combined with Water & Electric Autarkic Package)

- + Combi 6 heater (gas, electric)
- + Digital control panel for Combi heater
- + Electric floor heating
- + XPS insulation: front, rear, side walls, roof and floor
- + Insulated and heated wastewater pipes

Winter Comfort Package (for S 5004)

- + Additional Ultraheat device (2000W electric heater) for **existing S5004 warm-air heating system**
- + Electric floor heating
- + XPS insulation: front, rear, side walls, roof and floor
- + Insulated and heated wastewater pipes

Winter Comfort Package Combi 4

(cannot be combined with Water & Electric Autarkic Package)

- + Combi 4 heater (gas, electric)
- + Digital control panel for Combi heater
- + Electric floor heating
- + XPS insulation: front, rear, side walls, roof and floor
- + Insulated and heated wastewater pipes

Winter Comfort Package Snow

- + Warm-water heating
- + Electric floor heating
- + XPS insulation: front, rear, side walls, roof and floor
- + Insulated and heated wastewater pipes

Winter Comfort Package Snow Plus

- + Warm-water heating
- + Warm-water floor heating
- + XPS insulation: front, rear, side walls, roof and floor
- + Insulated and heated wastewater pipes

Winter Comfort Packages with warm-water heating

Tips & tricks

Make your caravan ready for winter

Glittering snow and enchanting winter landscapes are best enjoyed in a warm and cosy caravan. However, to make your winter fairytale come true you need to do some preparation. Here are the most important tips for getting your vehicle in top condition for the winter.

- + Put special winter gear in your vehicle (see checklist on the right).
- + Weight on the drive axle of the towing vehicle gives you extra traction and helps when manoeuvring on snow and ice.
- + Remove snow from the caravan before setting off on your trip: snow and ice that suddenly breaks loose from your roof can endanger others.
- + The best campsites are often fully booked – so get in touch and reserve your spot ahead of time.

- + If you can avoid it, do not park your caravan under trees covered with snow. If snow and ice are dislodged, roof fans can be damaged.
- + Place small boards or special plates underneath the crank supports so they do not sink into the ground and get frozen in place.
- + Always keep forced ventilation for the vehicle and gas systems clear; remove snow under the vehicle if necessary.
- + Keep the exhaust gas flue of the gas heating free of snow and ice.
- + Route power cables in such a way that they cannot freeze to surfaces or be damaged when removing snow.
- + Avoid introducing moisture into the interior; knock snow off clothing outside the vehicle. Briefly air out the interior by opening all doors and windows in the morning and after cooking.
- + Release the handbrake so that the rods, cables and brake shoes do not freeze up (use wheel chocks to secure the caravan against rolling away).

And then sit back and watch the driving snow with a cosy cup of tea.

Have fun!

Checklist for winter equipment

- Spade or shovel
- Hand brush or broom
- An old blanket to put on the ground when doing installation work
- Thick work gloves
- Jumper cables for the towing vehicle



Tips & tricks

Practical winter accessories



In order to improve the winter-readiness of your existing vehicle, tailor-made winter accessories are available from Dethleffs Original Accessories. Retailers such as Movera also offer a wide range of useful additions.

For caravans with a roof flue, a **flue extension (1)** makes sense if there is a lot of snow; special windbreak covers are also available. With heating systems with side-wall flues, there is the risk of condensation freezing and obstructing the exhaust air. Special **attachments (2)** prevent ice formation. If heating with gas, you are well advised to carry a reserve bottle. The **DuoControl (3)** automatically switches over to the full bottle for you. The lower the temperatures, the better the insulation should be. **Thermal mats (4)** can be used as additional insulation for your windows. In winter, **wheel covers and sleeves (5)** for the piping profile prevent cold wind from blowing under the vehicle and into the awning.



Water systems can be protected with the universal **EisEx heated cable (6)**, which is laid along the wastewater pipes and powered by the 12V supply. Please note: this requires a compatible connection as well as a suitable transformer for 230V operation. Real winter camping fans swear by floor heating. This can also be retrofitted as an electrical variant. There are also special **heating mats (7)** which can be laid under any carpet that is suitable for floor heating. They can be regulated via timer, thermostat or dimmer and are available in 12V and 230V versions.

More details are available from your Dethleffs dealer or online at www.dethleffs-original-zubehoer.com





Dethleffs GmbH & Co. KG
Arist-Dethleffs-Strasse 12 | 88316 Isny, Germany
Tel. +49 7562 987-881 | www.dethleffs.com